

Australia's First Adaptive Solar Energiser

Solar, Portable &
Adaptable

Monitors up to
25km Fence Line

High energy pulse
up to 2.5 Joules

Detachable Solar
Panel

Coordinated
Lightning Protection



Designed and Made in Australia by





Product Features

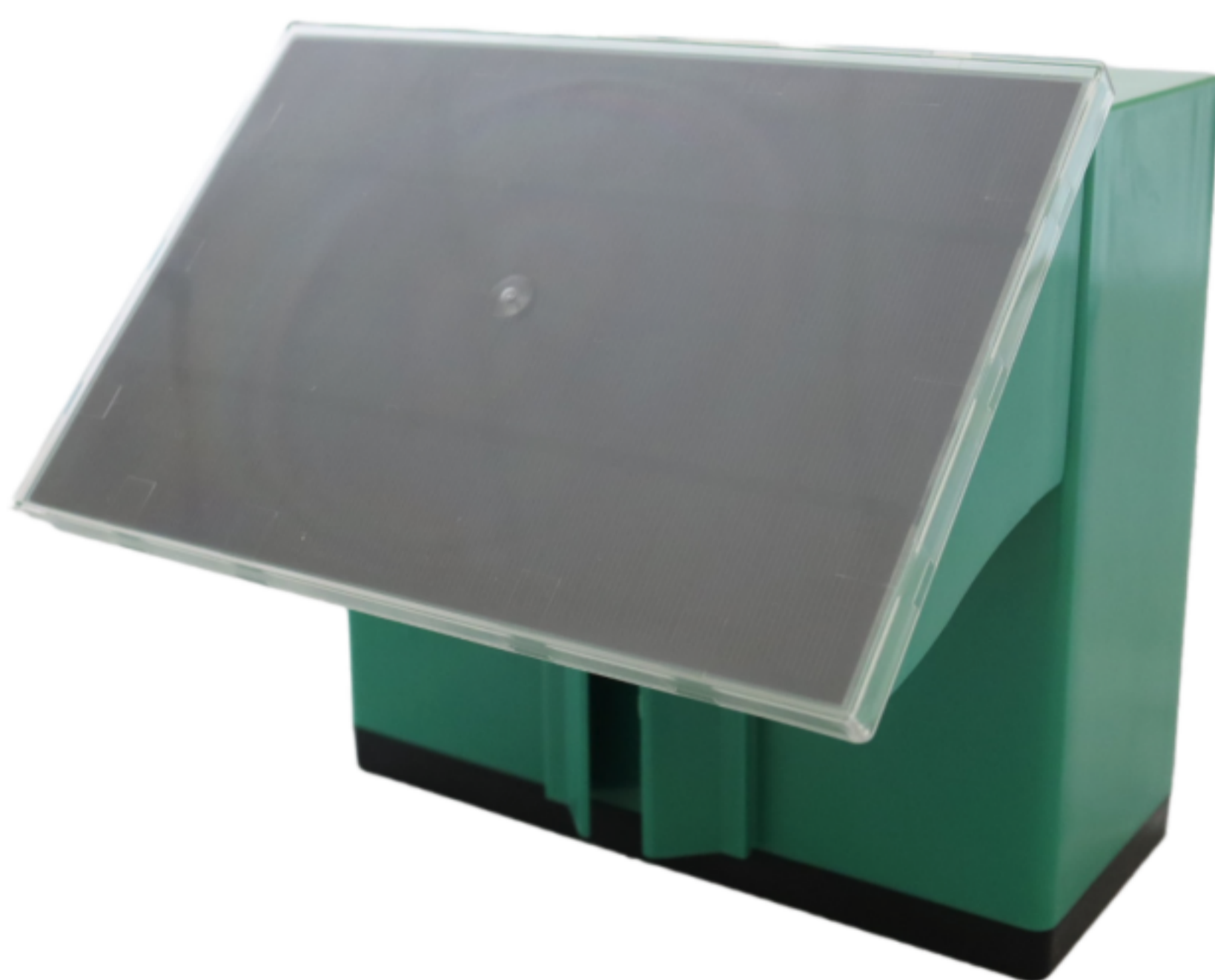


2 Button Control & LED Display

Each FarmHawk is operated by a 2-button control system which includes the power and display buttons.

The power button makes it simple to power on and off the unit.

The display button can display the output voltage in kilovolts and the fence amps. The unit can also indicate if there is a possible short in the fence via the LED display.



Detachable Solar Panel

Each FarmHawk includes a detachable solar panel.

The solar panel can be easily fitted; designed with 2 guide slots and a single screw for easy installation.

In the event the solar panel is damaged (by livestock or a force of nature) a replacement solar panel can be purchased and installed to the existing unit.



Lead Set

A set of connection leads are provided for easy connection of the FarmHawk unit to the fence.



12V 7AH Battery

A 12V 7AH Battery is included with each FarmHawk. In the event the battery needs to be replaced, a replacement battery can be purchased and fitted into the existing unit.



What is Adaptive Fencing?

Unit monitors up to 25km of fence line and only emits a high energy pulse (up to 2.5 joules) when an animal makes contact with the fence

The system is intelligently controlled by a microprocessor that can ignore changes in fence conditions like increasing moisture or excess grass growth into the wires

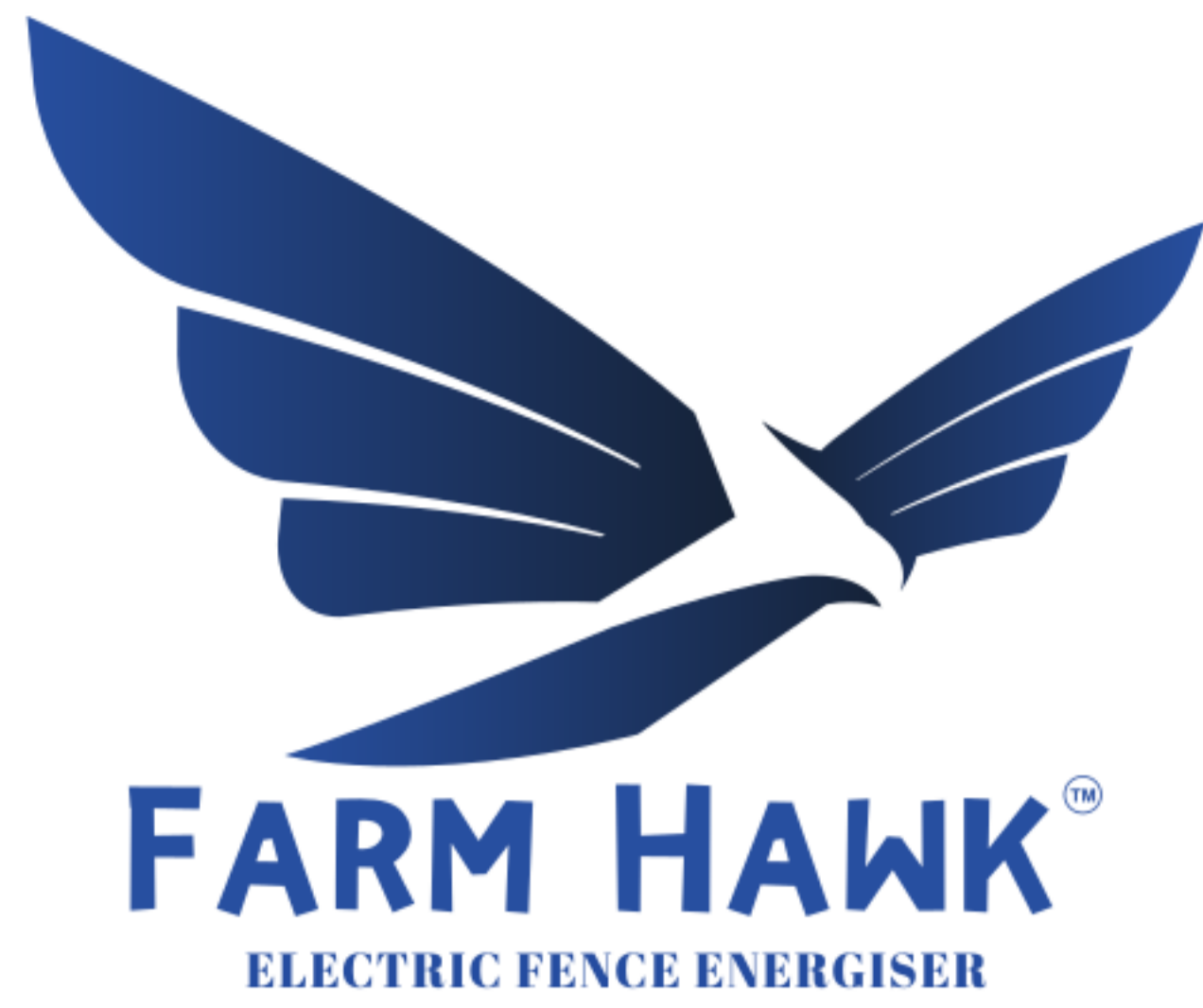
Each unit includes a coordinated lightning protection circuit, designed to reduce the damaging effects of lightning on the unit. *(Disclaimer Applies)*

The unit requires no operator setting or input. Simply connect to the fence, switch on and let the in-built microprocessor do the rest!



D-PULSE[®]
ADAPTIVE FENCING

Designed & Built in Australia to Industry Standards
AS/NZD 60335.2.76:2019 and IEC 60335-2-76 Ed3, MOD Standards



Product Specifications

Key Features

- 2 Button Controls
- Detachable Solar Panel
- Display Output Volts & Fence Amps
- Moisture & Ant Protection
- Co-Ordinated Lightening Protection
- Battery Protection

Product Contains

- 1 x Fence Energiser Unit
- 1 x Solar Assembly
- 1 x Screw to attach Solar Assembly
- 1 x Lead Set
- 1 x Manual

General Specifications

Stored Energy

- Low Power Pulse 0.27 Joules
- High Power pulse 2.5 Joules

Output Voltage

- No Load 8000 V
- 2000 OHM Load 5400V
- 1200 OHM Load 4100V

Pulse Repetition Rate

- With Solar Charging 1 Second
- No Solar Charge 1.5 Second

Solar Output

- Greater than 150mA in full sun

Battery Type

- 12V 7AH Sealed Gel Type

Current Draw

- Low Power Pulse with solar charge 36mA
- Low Power Pulse no solar charge 22.5mA
- High Power Pulse 187.5mA
- Unit Switched Off 5.5uA

(Lightening Protection Disclaimer: Due to the nature of lightening there is no absolute guarantee that any electrical system can be made to withstand a lightening strike. It depends on the proximity of the strike to the equipment, how conductive the medium between the strike and the equipment is and also the severity of the lightening strike. However there are things that can be done to reduce the effects of lightening, and these schemes can be quite useful to reduce the frequency of damage from lightening.)

**Note: Not suitable for use by small children or those suffering heart issues.
As the electric shock from the unit may present a danger**